



上海铭客传动系统有限公司  
电话: 021-33616578  
邮箱: lin@mingkebelt.com  
地址: 上海市闵行区沪闵路 6088 号凯德闵行商业中心 1906 室, 邮编 201199  
Shanghai Mingke Process Systems Co.,Ltd.  
Tel: 021-33616578  
E-mail: sales@mingkebelt.com  
Add: Rm. 1906, Capitaland Minhang Plaza, No. 6088 Humin Rd.,  
Minhang Dist., Shanghai 201199, China

工厂 | 南京铭客传动系统有限公司  
电话: 025-56806003  
地址: 江苏省南京市高淳经济开发区桃园北路 50 号, 邮编 211316  
Factory | Nanjing Mingke Process Systems Co.,Ltd.  
Tel: 025-56806003  
Add: No. 50 North Taoyuan Rd., Gaochun Economic Dvpt. Zone,  
Nanjing City, Jiangsu Prov. 211316, China

[www.mingkebelts.com](http://www.mingkebelts.com)

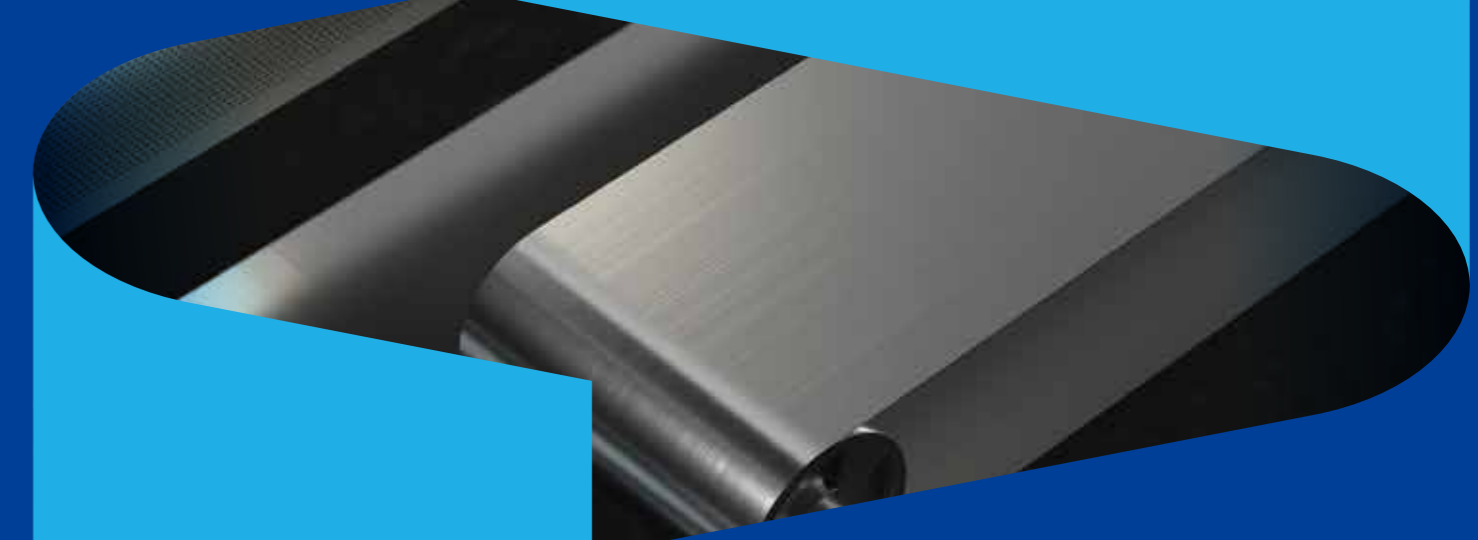


上海铭客传动系统有限公司  
Shanghai Mingke Process Systems Co.,Ltd.

铭客钢带  
Mingke Steel Belt  
鼓式硫化机专用钢带  
Steel Belts for Rotocure



RUBBER INDUSTRY  
橡胶行业



## 鼓式硫化机专用钢带 Steel Belts for Rubber Rotary Curing Machine (Rotocure)

鼓式硫化机是一种可连续硫化的专用设备，一般都是配备比较优质的钢带。配制钢带的好坏是直接影响产品质量及产能的关键因素。

Rotary Curing Machinery (Rotocure) is a continuous rubber drum vulcanization equipment, it is generally equipped with a relatively high quality steel belt to achieve continuous production. The quality of the equipped steel belt is a key factor which impact the quality of product and the production capacity.



### 鼓硫应用 Applications of Rotocure

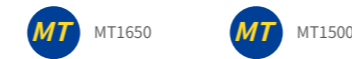
- 橡胶板、片 Rubber sheets
- 橡胶带制品 Rubber belts
- 橡塑地板 Rubber & plastic flooring
- 橡胶颗粒板 Rubber particle board
- 橡胶内衬 Rubber lining
- 防水材料 Waterproof material
- 印刷橡皮布 Printing mackintosh
- 输送带 Conveyors
- 墙纸 Wallpaper
- 纤维板 Fiber board
- 其他 Others



### 钢带尺寸 Dimension of Steel Belt

- 长度 Length- ≤150 m/pc
- 宽度 Width- 600-6000 mm
- 厚度 Thickness- 0.6/1.2/1.6/1.8/2.0/2.3/... mm

### 钢带型号 Steel Belt Model



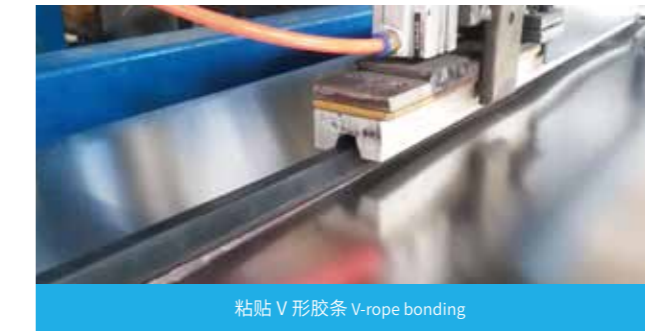
## 钢带服务 Steel Belt Services



横向焊接 Cross welding



快速补挖 Disc patching



粘贴 V 形胶条 V-rope bonding



裂纹修复 Crack Repairing

### 铭客钢带型号及主要性能参数 Steel Belt Model & Main Specifications

钢材类型 Type of steel	马氏体不锈钢钢带 Martensitic stainless steel belt	
指标 Index	型号 Model	MT1650
抗拉强度 (Mpa) Tensile Strength (Mpa)		1600
屈服强度 (Mpa) Yield Strength (Mpa)		1550
硬度 (HV) Hardness (HV)		480
延伸率 % Elongation %		5
焊接系数 Welding Factor		0.8

\* 本资料中数据量具代表性但并不受到绝对保证。数据亦会因所用材料不同而改变。  
\* The information and data presented in this data sheet are typical values, but not guaranteed. The information may be subjected to changes in material, properties and/or performance.