



#### 上海铭客传动系统有限公司

电话: 021-33616578

邮箱: lin@mingkebelt.com

地址: 上海市闵行区沪闵路 6088 号凯德闵行商业中心 1906 室, 邮编 201199

#### Shanghai Mingke Process Systems Co.,Ltd.

Tel: 021-33616578

E-mail: sales@mingkebelt.com

Add: Rm. 1906, CapitaLand Minhang Plaza, No. 6088 Humin Rd.,  
Minhang Dist., Shanghai 201199, China

#### 工厂 | 南京铭客传动系统有限公司

电话: 025-56806003

地址: 江苏省南京市高淳经济开发区桃园北路 50 号, 邮编 211316

#### Factory | Nanjing Mingke Process Systems Co.,Ltd.

Tel: 025-56806003

Add: No. 50 North Taoyuan Rd., Gaochun Economic Dvpt. Zone,  
Nanjing City, Jiangsu Prov. 211316, China

#### 华南办事处

电话: 189 1476 3685

地址: 广东省广州市番禺区石楼镇石清公路 78 号 (中创云谷) A 栋 512 室

#### South China Office

Tel: 189 1476 3685

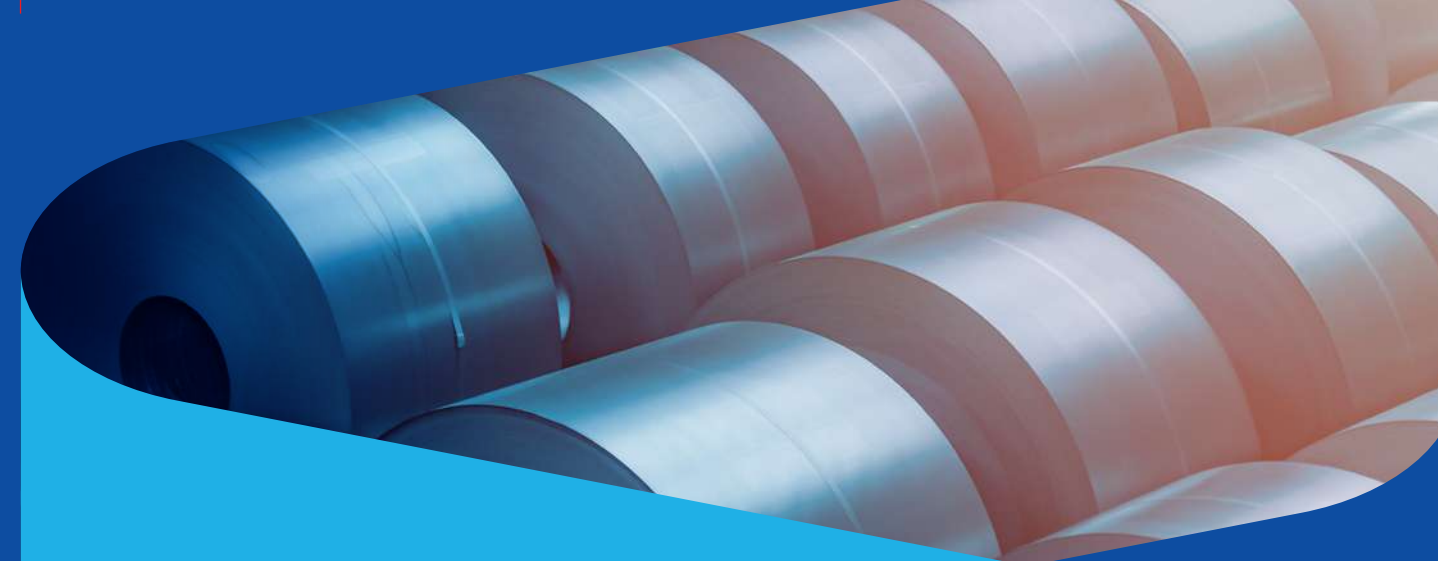
Add: Room 512, Building A, Zhongchuang Yungu, No. 78 Shiqing Road,  
Shilou Town, Panyu District, Guangzhou City, Guangdong Province, China

[www.mingkebelt.com](http://www.mingkebelt.com)



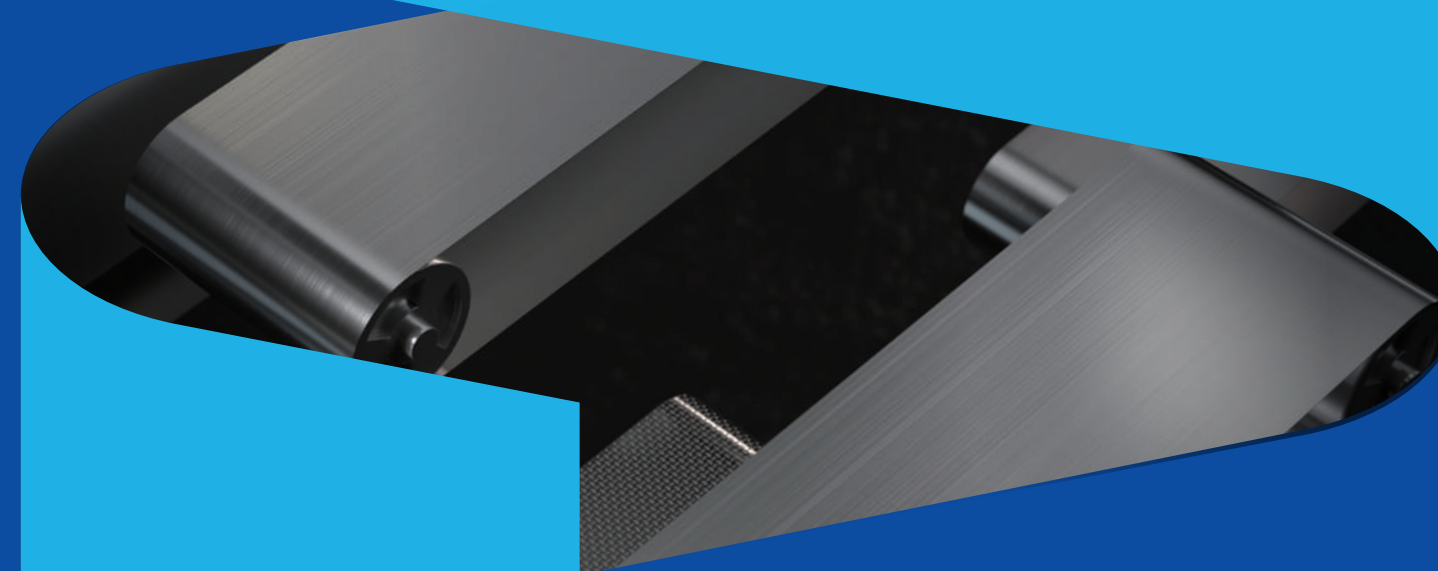
上海铭客传动系统有限公司

Shanghai Mingke Process Systems Co.,Ltd.



## HIGH-STRENGTH STEEL BELT MANUFACTURING

专注高强度钢带生产制造

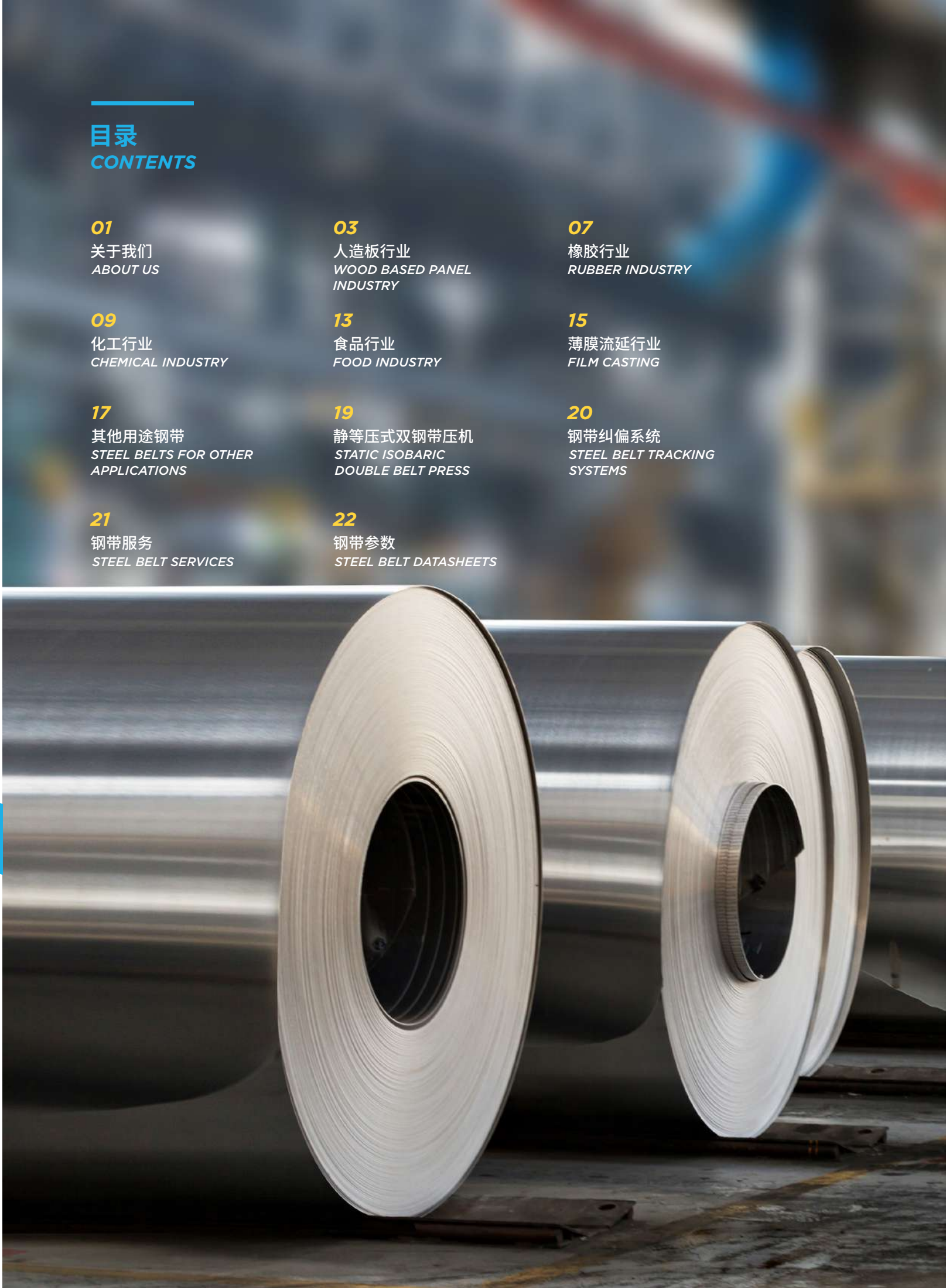


2025.07.02

Explore Steel Belt Art  
不断探索钢带艺术

目录  
CONTENTS

01 关于我们 ABOUT US	03 人造板行业 WOOD BASED PANEL INDUSTRY	07 橡胶行业 RUBBER INDUSTRY
09 化工行业 CHEMICAL INDUSTRY	13 食品行业 FOOD INDUSTRY	15 薄膜流延行业 FILM CASTING
17 其他用途钢带 STEEL BELTS FOR OTHER APPLICATIONS	19 静等压式双钢带压机 STATIC ISOBARIC DOUBLE BELT PRESS	20 钢带纠偏系统 STEEL BELT TRACKING SYSTEMS
21 钢带服务 STEEL BELT SERVICES	22 钢带参数 STEEL BELT DATASHEETS	





关于我们  
ABOUT US

铭客 (Mingke), 专注于高强度精密钢带的生产制造, 并提供以钢带为载体的连续化流程工艺解决方案。

铭客工厂 (南京铭客传动系统有限公司) 是一家高新技术企业, 位于南京市高淳经济开发区, 占地16000平方米; 总部及研发中心 (上海铭客传动系统有限公司) 位于上海。公司核心团队来自于浙江大学、厦门大学、大连理工等知名高校。凭借多年的技术创新和行业经验, 铭客已取得技术专利及荣誉15+项, 并获得了众多客户的支持与信任。

铭客在中国、中国台湾、波兰、土耳其、泰国、澳大利亚、俄罗斯、巴西等全球10+国家和地区有销售和服务中心。

铭客依托精心筛选优质钢材原料和先进钢带加工技术和工艺, 引用全球前沿科技带来了钢带优异的核心性能参数、完整且一流的产品矩阵, 已经成长为世界范围内细分领域的领导企业。铭客钢带已经成功赋能于人造板、化工 (结片造粒)、食品 (烘焙冷冻)、薄膜流延、传送带、陶瓷、造纸、烟草、轮胎测试等多种行业。

除钢带外, 铭客还提供静等压式双钢带压机、化工造粒机、化工结片机、输送机等设备和各种场景下的钢带纠偏系统。

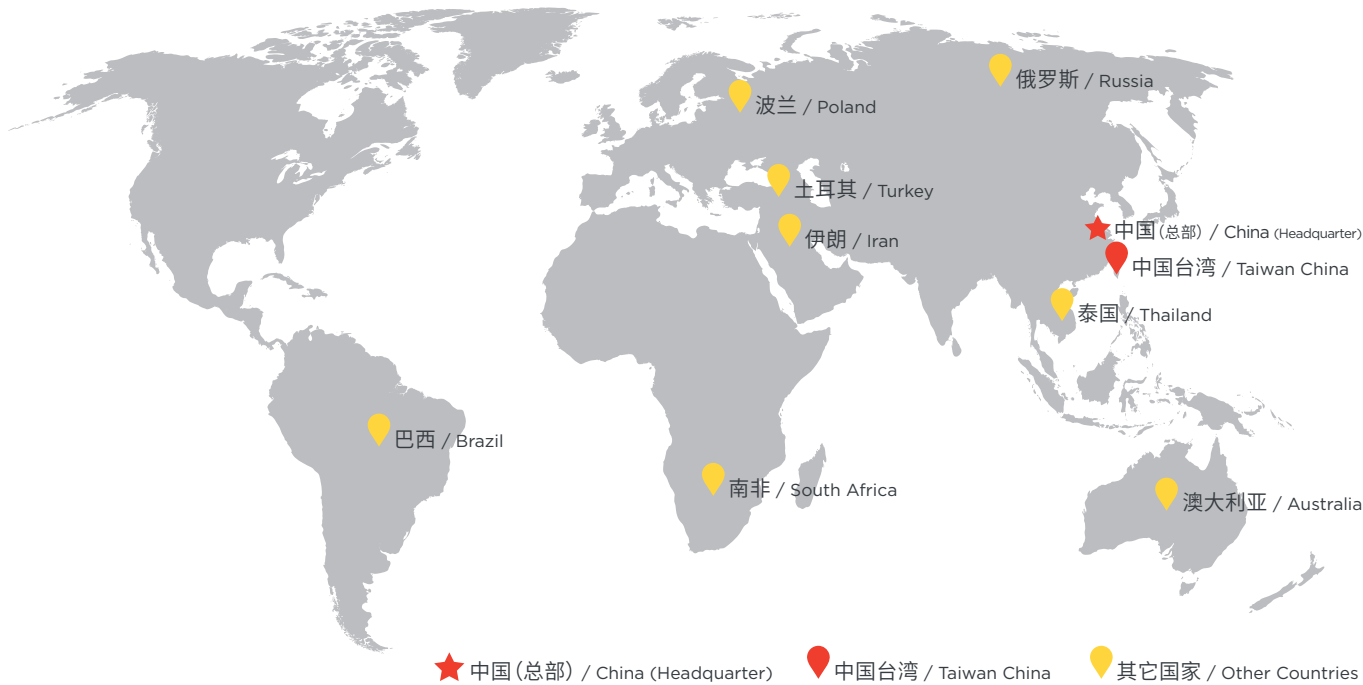
2016年, 铭客自主研发成功了首台静等压式双钢带压机, 并在2020年, 取得400°C高温技术突破。

Mingke is specialized in manufacturing high-strength steel belts and providing continuous process solutions based on steel belts. Our factory <Nanjing Mingke Process Systems Co.,Ltd.> is a high-tech enterprise, and located in Gaochun economic development zone, Nanjing city, covering an area of 16000 square meters. Our headquarter and R&D center <Shanghai Mingke Process Systems Co.,Ltd.> is located in Shanghai. Core team members of Mingke are from Zhejiang University, Xiamen University, Dalian University of Technology and other famous universities. With years of technological innovation and industry experience, Mingke has obtained 15+ technical patents and honors, and we have won the support and trust of many customers. Our sales and service centers are located in 10+ countries and regions around the world, such as China, Taiwan China, Poland, Turkey, Thailand, Australia, Russia, Brazil and so on.

Relying on the careful selection of high-quality steel raw materials and the use of advanced steel belt processing knowhow, Mingke brings excellently high quality steel belt products with core performance parameters and a complete & first-class product matrix by adopting global cutting-edge technologies. Mingke has grown up as a worldwide leader enterprise into this subdivision field. Mingke steel belt has successfully empowered in various industries, such as wood-based panel, chemical (cooling flaker / pastillator), food (baking and freezing), film casting, conveyor belts, ceramics, papermaking, tobacco, and tire testing industries, others.

Apart from steel belt, Mingke can also supply steel belt equipment, such as Isobaric Double Belt Press, chemical flaker / pastillator, Conveyor, and different steel belt tracking system for different scenarios.

In 2016, Mingke independently developed the first set of static & isobaric type Double Belt Press (DBP), and we achieved a breakthrough in high-temperature technology in 2020 - the heating temperature was successfully increased up to 400°C.



铭客在全球10+国家和地区有销售和服务中心  
Mingke sales and service centers are located in 10+ countries and regions around the world





# WOOD BASED PANEL INDUSTRY

人造板行业

## 平压线专用钢带

### Steel Belts for Double Belt Press

人造板平压线采用双钢带压机系统，是上下双钢带连续作业的钢带系统。人造板行业用钢带抗拉强度、硬度及韧性高，表面光滑和导热性好，并且对厚度公差、直线度和平整度要求高。

Wood based panel flat pressing production line adopts double belt press system, which works by upper and lower steel belts'continuous operation. Steel belt for wood-based-panel industry has high tensile/fatigue strengths, hardness and good surface roughness and thermal conductivity, and the thickness variation, straightness and flatness are all excellent.



#### 平压线应用

##### Applications of Double Belt Press

- 中密度纤维板 Medium Density Fiberboard (MDF)
- 高密度纤维板 High Density Fiberboard (HDF)
- 刨花板 Particle Board (PB)
- 定向刨花板 Oriented Structural Board (OSB)
- 单板层积材 Laminated Veneer Lumber (LVL)
- 其他 Others

#### 钢带型号

##### Steel Belt Model



MT1650



MT1500

#### 钢带尺寸

##### Dimension of Steel Belt

- 长度 Length- 可定制 Customizable
- 宽度 Width- 1400-3100 mm
- 厚度 Thickness- 2.3/2.7/3.0/3.5 mm





# 辊压线专用钢带

## Steel Belts for Mende Press

人造板辊压线采用门德压机,该压机作用在钢带上的应力极大,因钢带要经受交替的弯曲应力和热应力。在钢带每一次循环中要弯曲4次,并被加热。钢带必须维持高张力,以便对压制的板材施加高压。

Steel belt for Mende press bears extremely high stresses, because the belts bears continuous bending stress and thermal stress. The steel belt is bended 4 times and heated for each running cycle. The belt must be highly tensioned to exert high pressure onto mat & panel.

### 辊压线应用

#### Application of Mende Press

- 中密度板薄板 Thin Medium Density Fiberboard (MDF,1-8mm)

### 钢带尺寸

#### Dimension of Steel Belt

- 长度 Length- 可定制 Customizable
- 宽度 Width- 1400-3100 mm
- 厚度 Thickness- 1.8/2.0 mm

### 钢带型号

#### Steel Belt Model

**MT** MT1650

**MT** MT1500



# 单层压机专用钢带

## Steel Belts for Single Opening Press

单层压机由一条循环的钢带和一台较长的单层压机组成,钢带载着板坯逐进式地通过压机,然后挤压成型,是一种间歇式压板工艺。

与其他压机采用不锈钢钢带不同,单层压机采用经过硬化回火后的碳钢钢带。

Single Opening Press consists of a piece of cyclic steel belt and a set of long single press. The belt carries the mat and stepwise through the press for molding. It's a kind of stepwise cycle pressing technology.

Unlike other presses which are equipped with stainless steel belts, the single opening press adopts carbon steel belt which is hardened and tempered.

### 单层压机应用

#### Application of Single Opening Press

- 刨花板 Particle Board (PB)

### 钢带尺寸

#### Dimension of Steel Belt

- 长度 Length- 可定制 Customizable
- 宽度 Width- 1400-3100 mm
- 厚度 Thickness- 1.2/1.4/1.5 mm

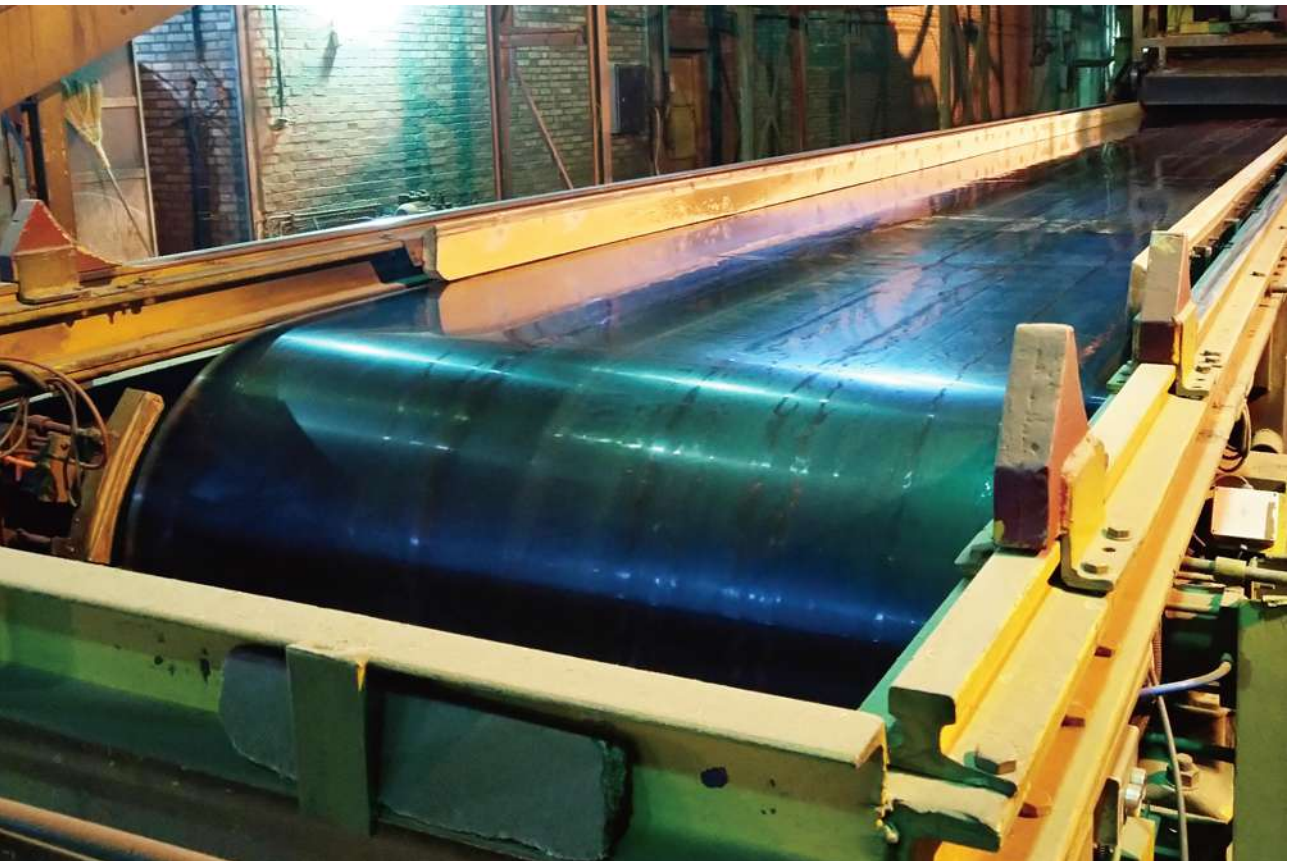
### 钢带型号

#### Steel Belt Model

**CT** CT1300

**CT** CT1100

**DT** DT1320





# RUBBER INDUSTRY

橡胶行业

## 鼓式硫化机专用钢带 *Steel Belts for Rubber Rotary Curing Machine (Rotocure)*

鼓式硫化机是一种可连续硫化的专用设备，配置优良的高强度钢带。

Rotary Curing Machinery (Rotocure) is a continuous rubber drum vulcanization equipment, equipped with a high quality steel belt to achieve continuous production.



### 鼓硫应用 *Applications of Rotocure*

- 橡胶板、片 Rubber sheets
- 橡胶带制品 Rubber belts
- 橡塑地板 Rubber & plastic flooring
- 橡胶颗粒板 Rubber particle board
- 橡胶内衬 Rubber lining
- 防水材料 Waterproof material
- 印刷橡皮布 Printing mackintosh
- 输送带 Conveyors
- 墙纸 Wallpaper
- 纤维板 Fiber board
- 其他 Others

### 钢带尺寸 *Dimension of Steel Belt*

- 长度 Length- 可定制 Customizable
- 宽度 Width- 600-6000 mm
- 厚度 Thickness- 0.6/1.2/1.6/1.8/2.0/2.3/... mm

### 钢带型号 *Steel Belt Model*





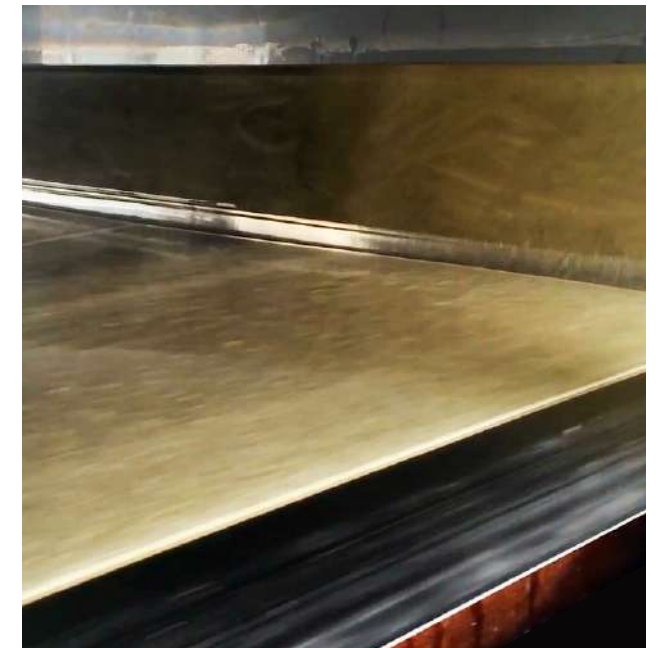
# CHEMICAL INDUSTRY

化工行业

## 造粒机、结片机专用钢带 *Steel Belts for Pastillator and Flaker*

铭客钢带广泛应用于化工造粒及结片冷却系统, 包括单/双钢带造粒机、结片机。

Mingke steel belts are widely applied to chemical cooling pastillating & flaking systems, including single/double belt pastillator & flaker machinery.



### 造粒机应用 *Applications of Pastillator*

- 硫磺 Sulphur
- 石蜡 Paraffin
- 树脂 Resin
- 沥青 Asphalt
- 顺酐 Maleic anhydride
- 热熔胶 Hot melt glue
- 其他 Others

### 结片机应用 *Applications of Flaker*

- 聚酯树脂 Polyester resin
- 环氧树脂 Epoxy resin
- 碳氢树脂 Hydrocarbon resin (C5/C9)
- 酚醛树脂 Phenolic resin
- 丙烯酸树脂 Acrylic resin
- 沥青 Asphalt
- 其他 Etc

### 钢带型号 *Steel Belt Model*



AT1200



AT1000



DT980



MT1050

### 钢带尺寸 *Dimension of Steel Belt*

- 长度 Length- 可定制 Customizable
- 宽度 Width- 600-3000 mm
- 厚度 Thickness- 0.5/0.8/1.0/1.2 mm



## 化工结片机

### Chemical Flaking Machine

#### 结片机应用

Application of Flaker

环氧树脂、硫磺、石蜡、氯乙酸、石油脂、碳酸石、颜料、聚酰胺、聚酰胺脂、聚酯、聚酯树脂、聚乙烯、聚氨酯、聚氨酯树脂、酸、酸酐、丙烯酸树脂、脂肪酸、烷基硫化物、氢氧化铝、硫酸铝、不规则丙烯酸、乙烯基乙腈,有机脂肪酸、脂肪胺、硬脂酸盐、食品化学、烃树脂、工业化学、氯化镁、硝酸镁、氯化合物、石油钴、胂、硝酸钾、硫酸钾、粉末涂料、粉末涂料、精制产品、滤渣、树脂、熔盐、硅胶、硝酸钠、钠硫化物、硫磺、墨粉、化工废料、蜡、单体、胶粘剂、涂料、对二氯苯等。

Epoxy resin, sulfur, paraffin, chloroacetic acid, petroleum grease, stone carbonate, pigment, polyamide,polyamide grease, polyester, polyester resin, polyethylene, polyurethane, polyurethane resin, acid, anhydride, acrylic resin, fatty acid, alkyl sulfide, aluminum hydroxide, aluminum sulfate, irregular acrylic acid, vinyl acetonitrile, organic fatty acids, fatty amines, stearates, food chemistry, hydrocarbon resins, industrial chemistry,magnesium chloride, magnesium nitrate, chlorine compound, petroleum cobalt, hydrazine, potassium nitrate, potassium sulfate, powder coating, powder coating, refined product, filter residue, resin, molten salt, silica gel, sodium nitrate, sodium sulfide, sulfur, toner, chemical waste, wax, monomer, adhesive, coating, p-dichlorobenzene, others.

#### 单钢带结片机

Single Steel Belt Flaker

熔融状态的物料经伴热管道进入布料装置，并不断的从布料器中溢出，均匀分布在运动的钢带上表面,物料在钢带上形成薄层并受到钢带背面的冷却水均匀冷却,利用钢带自身优良的热传递特性，促使熔融物料在移动过程中固化成固体物料片。固化后的产品被下料刮刀从钢带上刮下，然后由破碎机破碎到设定的尺寸。

The molten material enters the distribution device through the heat tracing pipe and continuously overflows onto the upper side of the running steel belt from the distributor. With the excellent heat transfer characteristics of the steel belt, the material forms a thin layer on the steel belt and being cooled down and turns into solid flake by water sprayed onto the back side of the belt. The cooled flake is scratched down from the steel belt by a scraper and then crushed by crusher into set sizes.

#### 双钢带结片机

Double Steel Belt Flaker

熔融状态的物料经伴热管道进入布料装置，并不断的从布料器中溢出，均匀地进入到两层钢带之间。物料在上下两层钢带间受到冷却水的均匀冷却，用钢带自身优良的热传递特性，使熔融物料在移动过程中固化成固体物料片。固化后的产品被下料刮刀从钢带上刮下，然后由破碎机破碎到设定的尺寸。

The molten material enters the distribution device through the heat tracing pipe and continuously overflows into the gap between upper and lower steel belts from the distributor.With the excellent heat transfer characteristics of the steel belts, the material is cooled down and turns into solid flake by water sprayed onto the back sides of the belts. The cooled flake is scratched down from the steel belt by a scraper and then crushed by crusher into set sizes.

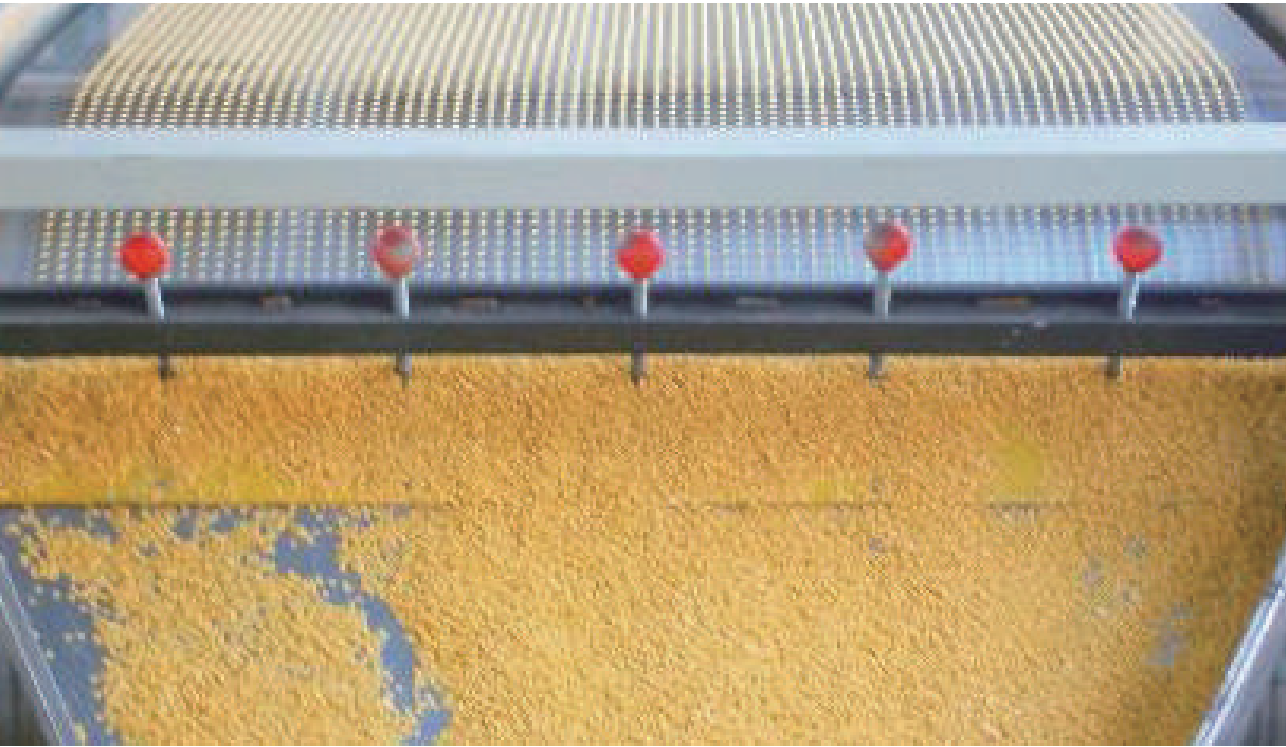


## 化工造粒机

### Chemical Pastillating Machine

钢带式冷却造粒机属于熔融造粒工艺，热融态物料通过布料器均布在匀速移动的钢带上，钢带下方设置有连续喷淋、冷却装置，迫使钢带上的物料在移动过程中得以迅速的冷却、固化，从而达到造粒的目的。

Steel belt cooling pastillator is a kind of melt granulation process equipment. Molten materials drop evenly onto the steel belt which is moving at a uniform speed. Due to cold water spraying onto the back side of the belt, the molten materials are cooled down & solidified quickly and finally achieve the purpose of pastillating.



#### 造粒机应用

Application of Pastillator

石蜡、硫磺、氯乙酸、PVC粘合剂、PVC稳定剂、环氧树脂、酯、脂肪酸、脂肪胺、脂肪酯、硬脂酸盐、肥料、填充蜡、杀菌剂、除草剂、热熔粘合剂、精制产品、滤渣、橡胶、橡胶化学品、山梨醇、稳定剂、硬脂酸盐、硬脂酸盐,合成食品粘合剂、合成催化剂、沥青焦油、表面活性剂、脲、植物油、植物蜡、混合蜡、硝石、硝酸锌、硬脂酸锌、酸、硬石膏、添加剂、粘合剂、农用化学品、AKD蜡、硝酸铝、磷酸铵、抗氧化剂、抗发酵、沥青烯、热塑性碱、蜂蜡，双酚A，氯化钙，己内酰胺，催化剂，硬脂酸钴，化妆品，烃类树脂，工业化学，介质，马来酸酐，结晶蜡，硫磺产品，镍催化剂，杀虫剂，聚乙烯蜡，医疗介质，光化学物质，沥青，聚酯，聚乙二醇，聚乙烯蜡，聚丙烯蜡，聚丙烯，聚氨酯，其他。

Paraffin, sulfur, chloroacetic acid, PVC adhesive, PVC stabilizer, epoxy resin, ester, fatty acid, fatty amine, fatty ester, stearate, fertilizer, filler wax, fungicide, herbicide, hot melt adhesive, refined productsfilter residue, rubber, rubber chemicals, sorbitol, stabilizers, stearates, stearic acid, synthetic food adhesives, synthetic catalysts, bitumen tar, surfactants, elixirs, urea, vegetable oil, vegetable wax, mixed wax, wax, zinc nitrate, zinc stearate, acid, anhydrite, additive, adhesive, agrochemical, AKD-wax, aluminum nitrate, ammonium phosphate, antioxidant, anti-fermentation, asphalt alkene, thermoplastic base, beeswax, bisphenol A, calcium chloride, caprolactam,catalyst, cobalt stearate, cosmetics, hydrocarbon resin, industrial chemistry, medium, maleic anhydride, crystal wax, sulfur product, nickel-catalyst, Insecticides, PE-wax, medical media, photochemicals, asphalt, polyester, polyethylene glycol, polyethylene wax, polypropylene, polyurethane, others.



# FOOD INDUSTRY

食品行业

## 隧道式烘焙烤炉专用钢带 Steel Belts for Tunnel Bakery Oven

隧道式烘焙烤炉分多种,其中有钢带式隧道烤炉。钢带烤炉采用回火硬化的碳钢钢带作为传送带。

我们可以为钢带烤炉提供标准钢带和开孔钢带两种不同形式的钢带。铭客碳钢带使用寿命长(10-20年),坚硬耐磨的钢带表面保证了产品的质量,钢带的平整不变形保证了产量最大化。

There are three different types of tunnel bakery ovens, one of which is steel belt type tunnel bakery oven. Steel belt oven adopts temper hardened carbon steel belt as conveyor.

For bakery oven, Mingke can provide standard solid steel belt and perforated steel belt. Our belts have long lifespan (10-20 years). Its hard and wear-resistant surface ensures the quality of the products, and its flat and undistorted characteristics ensure the maximum production capacity.

### 烤炉应用

#### Applications of Bakery Oven

- 饼干 Biscuits
- 曲奇饼 Cookies
- 瑞士卷 Swiss roll
- 薯片 Potato chips
- 蛋黄派 Egg pies
- 甜点 Sweeties
- 膨化米饼 Expanding rice cakes
- 夹心蛋糕 Sandwich cakes
- 小馒头 Small steamed buns
- 肉松饼 Shredded pork puff
- 手撕面包 (Steamed) bread
- 其他 Others

### 钢带型号

#### Steel Belt Model



CT1300



CT1100

### 钢带尺寸

#### Dimension of Steel Belt

- 长度 Length- ≤150 m/pc
- 宽度 Width- 600-1500 mm
- 厚度 Thickness- 0.8 / 1.2 / 1.4 mm

## 单冻机专用钢带 Steel Belts for IQF

隧道式单体速冻机,简称单冻机,广泛应用于食品速冻领域,其中一种为配备不锈钢钢带式的钢带单冻机,主要用于零下40-50℃条件下水产品(如各种鱼片、鱼段、虾类、扇贝类)以及其他软质物料的快速冻结。

对于钢带型单冻机,铭客不仅可以供应钢带,而且可以提供钢带纠偏解决方案,包括V型橡胶条和机械纠偏两种方案。

Tunnel type individual quick freezer, so called IQF, is widely applied in the field of food quick-freezing. There are many kinds of IQFs, one of which is the IQF equipped with flat stainless steel belt, which is mainly used for -40~-50℃ sea food products (like various fish fillets, fish sections, shrimps and scallop, etc.) and other soft materials quick-freezing.

For steel belt type IQF, Mingke can not only supply steel belts, but also provide steel belt true tracking solutions, including V-shaped rubber ropes and mechanical tracking solutions.

### 钢带型号

#### Steel Belt Model



AT1200



AT1000

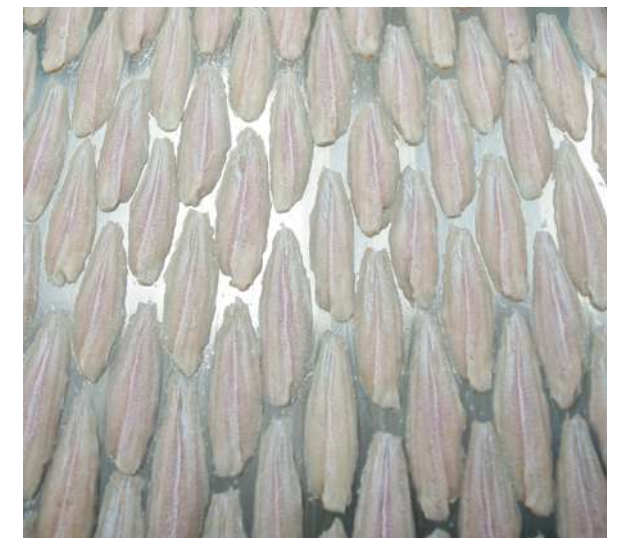


MT1050

### 钢带尺寸

#### Dimension of Steel Belt

- 长度 Length- 可定制 Customizable
- 宽度 Width- 600-6000 mm
- 厚度 Thickness- 1.0/1.2 mm





# FILM CASTING

## 薄膜流延行业

### 薄膜流延设备专用钢带

#### Steel Belts for Film Casting Equipment

铭客镜面钢带可应用在薄膜流延设备中，薄膜流延广泛应用于生产包装塑料薄膜、过滤膜和多功能塑料膜、洗衣凝珠等领域。

Mingke supper mirror polished steel belt can be used in film casting equipment. Film casting is widely used in the production of Packaging plastic films, filter films and Multi-functional plastic films, Laundry pods and other fields.

#### 薄膜流延应用

##### Applications for Film Casting

- 包装塑料薄膜 Packaging plastic films
- 过滤膜 Filter films
- 多功能塑料膜 Multi-functional plastic films
- 洗衣凝珠 Laundry pods

#### 钢带型号

##### Steel Belt Model

- |           |        |           |        |
|-----------|--------|-----------|--------|
| <b>AT</b> | AT1200 | <b>AT</b> | AT1000 |
| <b>MT</b> | MT1650 | <b>MT</b> | MT1050 |

#### 钢带尺寸

##### Dimension of Steel Belt

- 长度 Length- 可定制 Customizable
- 宽度 Width- 600-1500 mm
- 厚度 Thickness- 0.5/0.8/1.0/1.2/1.6/1.8/... mm





# STEEL BELTS FOR OTHER APPLICATIONS

## 其他用途钢带



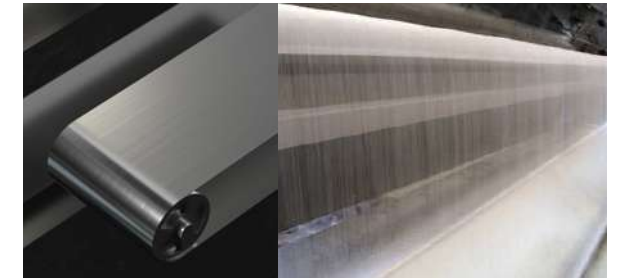
### 蔬果干燥机

#### *Drier For Fruit And Vegetables*

采用冲孔钢带，有不同冲孔规格可供选择。  
Perforated belts, different perforation patterns for option.

推荐使用钢带

Recommended Steel Belt: AT1200 / DT980



### 薄膜流延

#### *Film Casting*

采用镜面钢带，表面粗糙度 $\leq 0.04\mu\text{m}$ 。  
Super-mirror-polished-steel-belt,  $Ra \leq 0.04\mu\text{m}$ .

推荐使用钢带

Recommended Steel Belt: AT1200 / AT1000 / MT1650 / MT1050



### 巧克力生产线

#### *Chocolate Production Line*

推荐使用钢带

Recommended Steel Belt: AT1200 / MT1050 / CT1300



### 肉类输送

#### *Meat Conveyor*

推荐使用钢带

Recommended Steel Belt: AT1200



### 适用于汽车工业的风洞分析、轮胎试验、车辆设计等试验

*Applied to automotive industry for testing and experiments, like tire tests and vehicle design processes*

推荐使用钢带

Recommended Steel Belt: MT1650



### 造纸业

#### *Papermaking*

推荐使用钢带

Recommended Steel Belt: MT1650



### 瓷砖压制

#### *Ceramic Press*

推荐使用钢带

Recommended Steel Belt: MT1650



### 分拣系统

#### *Sorter System*

推荐使用钢带

Recommended Steel Belt: MT1650



静等压式双钢带压机

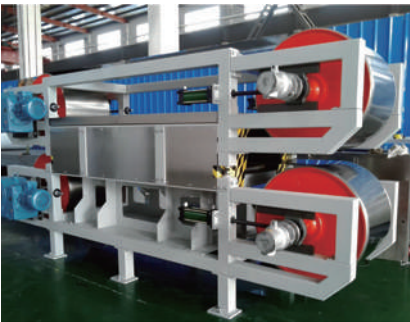
Static Isobaric Double Belt Press

静等压式双钢带压机是铭客除钢带外自主研发生产的一款压机设备。密封系统、钢带、热压板形成静等压腔体, 通过钢带对物料加热加压, 由轮毂驱动钢带运转, 实现连续生产。

2016年, 铭客自主研发成功了首台静等压式双钢带压机, 并在2020年将该压机加热温度升至400°C。

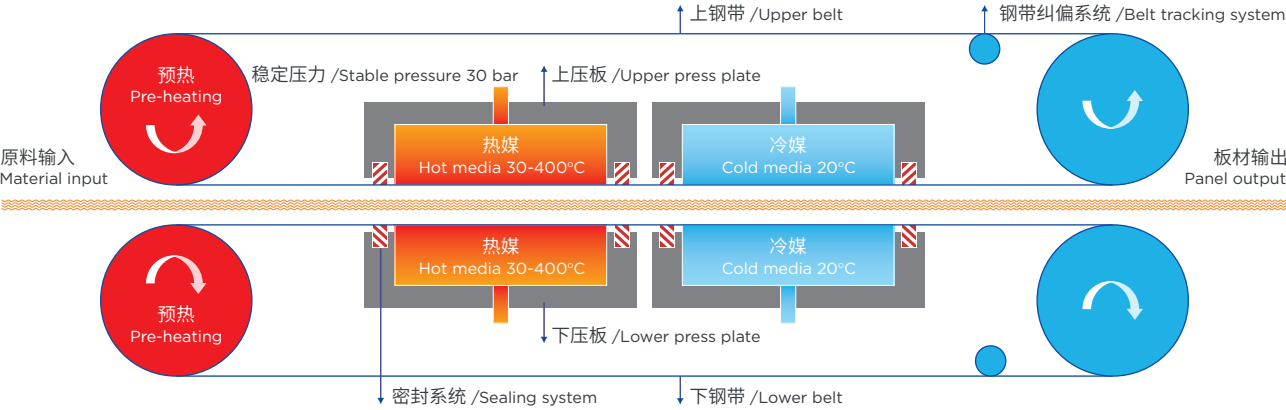
The static isobaric double steel belt press is a press equipment independently developed and produced by Mingke in addition to steel belts. Sealing system, steel belt and hot pressing-plate consist a static isobaric chamber. The material is heated and pressurized by the steel belt. and the steel belts are driven by Rollers to achieve continuous production.

In 2016, Mingke successfully developed the first Static Isobaric Double Belt Press (DBP), and in 2020 the heating temperature of the press was be raised to 400°C.



工作原理图

Working Principle



主要参数

Main Parameters

压机类型 Press type	静等压式双钢带压机 Static isobaric double belt press
温度 Temperature	≤400°C
压力 Pressure	≤30 Bar
物料宽度 Material width	可定制 customize
运行速度 Operating speed	可定制 customize
运行长度 Process length	可定制 customize
适用钢带型号 Applicable steel belt	MT1650
产地 Origin	南京 Nanjing city

静等压式双钢带压机应用领域

Applications fields of Static Isobaric Double Belt Press

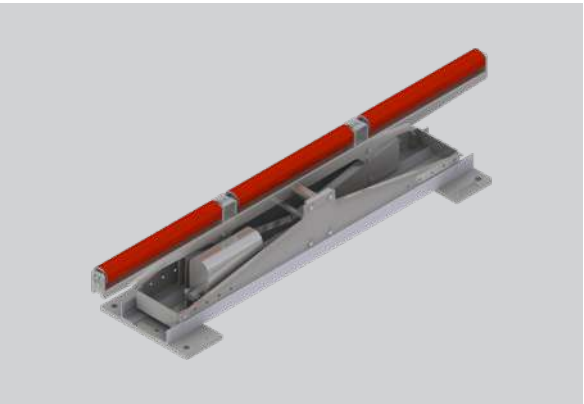
- 复合材料（纤维、金属、木板、塑料等）Composite materials (fiber, metal, wood, plastic, etc.)
  - 三聚氰胺贴面板 Melamine faced boards
  - 印刷线路板 Melamine faced boards
- 弹性地板 Resilient floor
  - 玻璃纤维和碳纤维板 Glass fiber and carbon fiber board
  - 其它 Others

钢带纠偏系统

Steel Belt Tracking Systems

我们提供以下纠偏解决方案, 以应对于不同行业的需求。

We can provide different steel belt tracking systems for different industries.



1. 紧凑推杆型自动纠偏 MKCBT，多应用在食品隧道烤炉。

1. Compact push rod auto tracking system - MKCBT,Recommended to bakery oven.



3. 液压型自动纠偏 MKHST，适用于压机等重型机械。最大张紧压力可达 20Mpa 以上。

3. Hydraulic auto tracking system - MKHST, recommended to heavy machines, like Presses. The tension force reaches more than 20Mpa.



2. 紧凑电机型纠偏 MKAT，适用于食品行业烤炉钢带。

1. Compact electrical motor auto tracking system -MKAT, Recommended to bakery oven.



4. 气缸型自动纠偏 MKPAT，适用于化工行业。

4. Cylinder auto tracking sytem - MKPAT, recommended to chemical industry.



钢带服务
Steel Belt Services



横向焊接 Cross welding



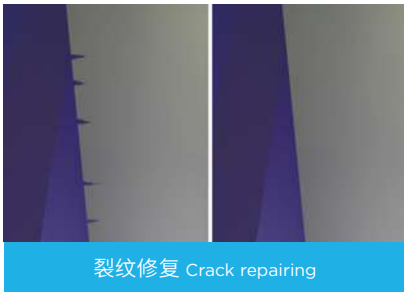
粘贴 V 形胶条 V-rope bonding



快速补挖 Disc patching



喷丸 Shot peening



裂纹修复 Crack repairing

铭客钢带型号及主要性能参数
Steel Belt Model & Main Specifications

钢材类型 Type of steel	马氏体不锈钢 Martensitic stainless steel		奥氏体不锈钢 Austenitic stainless steel		双相超耐腐蚀不锈钢 Duplex super corrosion resistant stainless steel	碳钢 Carbon steel			
型号 Model 指标 Index	MT1650	MT1150	AT1200	AT1000	DT980	CT1500	CT1300	CT1100	DT1320
抗拉强度 (Mpa) Tensile Strength (Mpa)	1600	1150	1200	1000	980	1500	1210	950	1340
屈服强度 (Mpa) Yield strength (Mpa)	1550	1100	980	780	790	1050	1050	850	1250
疲劳强度 (Mpa) <sup>(1)</sup> Fatigue strength (Mpa)	±630	±500	±470	±400	±380	±380	±430	±460	±410
硬度 (HV <sub>5</sub> ) Hardness (HV <sub>5</sub> )	480	380	360	320	306	460	360	270	360
延伸率 % Elongation %	5	7	20	6	10	9	10	8.5	4
焊接系数 Welding factor	0.80	0.95	0.70	0.70	0.65	0.73	0.90	0.89	0.75

(1) 测试样品的 50% 可以承受 2,000,000 次负荷循环。  
(2) 50% of the test specimen withstand a minimum of 2\*10<sup>6</sup> load cycles.  
\* 本资料中数据虽具代表性但并不受到绝对保证。数据亦会因所用材料不同而改变。  
\* The information and data presented in this data sheet are typical values, but not guaranteed. The information may be subjected to changes in material, properties and/or performance.

钢带参数
Steel Belt Datasheets



铭客MT1650是一种基于铬镍铜的低碳沉淀硬化马氏体15-7PH不锈钢钢带。其特点是：

MINGKE MT1650 is a kind of low carbon chromium-nickel-copper precipitation hardening martensitic 15-7PH stainless steel belt. It' s characterized by:

- 出色的机械性能 Excellent mechanical properties
- 优异的静态强度 Excellent static strength
- 优异的疲劳强度 Excellent fatigue strength
- 良好的耐腐蚀性 Good corrosion resistance
- 极好的耐磨性 Very good wear resistance
- 很好的可修复性 Very good repairability

化学成分 (公称值)
Chemical Composition (Nominal) %

碳 C	硅 Si	锰 Mn	磷 P	硫 S	铬 Cr	镍 Ni	钛 Ti	铜 Cu	钼 Mo	氮 N	铁 Fe
0.04	1.59	0.48	0.02	0.001	14.02	7.01	0.34	0.69	0.84	0.008	-

静态强度
室温下的标准强度 (公称数值)
Static Strength
Standard strength at room temperature (nominal values)

参量 Parameters	抗拉强度 Tensile strength		屈服强度 Yield strength		延伸率 Elongation	焊接系数 Weld factor	硬度 Hardness
	Mpa	Ksi	Mpa	Ksi	A5(%)	Rm/Rm	HV5
母材 Parent Material	1600	232	1550	225	5	*	480
焊接区域 ( 未热处理 ) Welding area (not heat treated)	1150	167	1100	160	5	0.70	*
焊接区域 (热处理 ) Welding area (heat treated)	1300	188	1250	181	3	0.80	*

供货范围
Scope of Supply

长度 Length：可定制 customize
宽度 Width：1000 / 1200 / 1550 / ... mm
厚度 Thickness：1.0 / 1.2 / 1.6 / 1.8 / 2.0 / 2.3 / 2.7 / 3.0 / 3.5 mm
提示：单幅钢带最宽宽度 2000mm，超过此宽度需要纵向拼接。特殊规格可以定制。 Tips: Max. width of a single belt is 2000mm, customized sizes via cutting or longitudinal welding are available.

\* 本资料中数据虽具代表性但并不受到绝对保证。数据亦会因材料批次不同而改变。  
\* The data in this sheet are typical values, but not guaranteed. The information is subject to changes in different batches of material.





铭客CT1500钢带由回火硬化的碳钢制成，其特点是：

MINGKE CT1500 steel belt is made of hardened and tempered carbon steel and is characterized by:

- 极好的静态强度 Very good static strength
- 极好的疲劳强度 Very good fatigue strength
- 极好的导热性能 Very good thermal properties
- 优异的耐磨性 Excellent wear resistance
  - 良好的可维修性 Good repairability

CT1500具有坚硬、光滑的表面和黑色氧化层，使其适用于腐蚀风险低的任何应用。极好的导热性能使其非常适合用于烘烤以及液体，糊状和细粒产品的加热和干燥。

CT1500 has hard & smooth surface and a black oxide layer, which makes it suitable for any application with a low risk for corrosion. Very good thermal properties make it ideal for baking and for heating and drying of liquids, pastes and fine-grained products.

化学成分 (公称值)  
Chemical Composition (Nominal) %

碳 C	硅 Si	锰 Mn	磷 P	硫 S	铝 Ait	钛 Ti	镍 Ni	铜 Cu	铁 Fe
0.21	0.52	2.49	0.01	0.001	0.03	-	-	-	-

静态强度  
室温下的标准强度（公称数值）  
Static Strength  
Standard strength at room temperature (nominal values)

参量 Parameters	抗拉强度 Tensile strength		屈服强度 Yield strength		延伸率 Elongation	焊接系数 Weld factor	硬度 Hardness
	Mpa	Ksi	Mpa	Ksi	A5(%)	Rm/Rm	HV5
母材 Parent material	1500	217	1050	152	9	*	460
焊接区域 Welding area	1100	159	1000	145	5	0.73	*

供货范围  
Scope of Supply

长度 Length：可定制 customize
宽度 Width：600 / 800 / 1000 / 1200 / 1500 / ... mm
厚度 / Thickness：0.8 / 1.2 / 1.4 / 1.5 mm
提示：单幅钢带最宽宽度 1500mm，超过此宽度需要纵向拼接。特殊规格可以定制。 Tips: Max. width of a single belt is 1500mm, customized sizes via cutting or longitudinal welding are available.

\* 本资料中数据具代表性但并不受到绝对保证。数据亦会因材料批次不同而改变。  
\* The data in this sheet are typical values, but not guaranteed. The information is subject to changes in different batches of material.



铭客MT1150是一种基于铬镍铜的低碳沉淀硬化马氏体15-7PH不锈钢钢带。其特点是：

MINGKE MT1150 is a kind of low carbon chromium-nickel-copper precipitation hardening martensitic 15-7PH stainless steel belt. It' s characterized by:

- 良好的机械性能 Good mechanical properties
- 良好的静态强度 Good static strength
- 极好的疲劳强度 Very good fatigue strength
- 良好的耐腐蚀性 Good corrosion resistance
  - 良好的耐磨性 Good wear resistance
  - 出色的可维修性 Excellent repairability

化学成分 (公称值)  
Chemical Composition (Nominal) %

碳 C	硅 Si	锰 Mn	磷 P	硫 S	铬 Cr	镍 Ni	钛 Ti	铜 Cu	钼 Mo	氮 N	铁 Fe
0.04	1.59	0.48	0.02	0.001	14.02	7.01	0.34	0.69	0.84	0.008	-

静态强度  
室温下的标准强度（公称数值）  
Static Strength  
Standard strength at room temperature (nominal values)

参量 Parameters	抗拉强度 Tensile strength		屈服强度 Yield strength		延伸率 Elongation	焊接系数 Weld factor	硬度 Hardness
	Mpa	Ksi	Mpa	Ksi	A5(%)	Rm/Rm	HV5
母材 Parent material	1150	167	1100	161	7	*	380
焊接区域 ( 未热处理 ) Welding area (not heat treated)	1130	164	1080	157	7	0.95	*

供货范围  
Scope of Supply

长度 Length：可定制 customize
宽度 Width：600 / 800 / 1000 / 1200 / 1500 / ... mm
厚度 Thickness：0.8 / 1.0 / 1.2 mm
提示：单幅钢带最宽宽度 1550mm，超过此宽度需要纵向拼接。特殊规格可以定制。 Tips: Max. width of a single belt is 1550mm, customized sizes via cutting or longitudinal welding are available.

\* 本资料中数据具代表性但并不受到绝对保证。数据亦会因材料批次不同而改变。  
\* The data in this sheet are typical values, but not guaranteed. The information is subject to changes in different batches of material.





铭客AT1200是一种奥氏体不锈钢钢带, 其特点是：

MINGKE AT1200 is an austenitic stainless steel and it is characterized by:

- 良好的静态强度 Good static strength
  - 极好的疲劳强度 Very good fatigue strength
  - 极好的耐腐蚀性 Very good corrosion resistance
- 良好的耐磨性 Good wear resistance
  - 很好的可修复性 Very good repairability

它是一种具有良好耐磨性的高耐腐蚀钢带, 使其成为食品和化学工业(冷却, 冷冻和干燥过程)的通用选择。

It is a high corrosion resistant steel with good wear resistance. This makes it the universal choice for food and chemical industries (cooling, freezing and drying processes).

化学成分 (公称值)  
Chemical Composition (Nominal) %

碳 C	锰 Mn	磷 P	硫 S	硅 Si	铬 Cr	镍 Ni	氮 N	铁 Fe
≤0.15	≤2.00	≤0.05	≤0.03	≤1.00	16.00-20.00	6.00-10.00	≤0.10	-

静态强度  
室温下的标准强度 (公称数值)  
Static Strength  
Standard strength at room temperature (nominal values)

参量 Parameters	抗拉强度 Tensile strength		屈服强度 Yield strength		延伸率 Elongation	焊接系数 Weld factor	硬度 Hardness
	Mpa	Ksi	Mpa	Ksi	A5(%)	Rm/Rm	HV5
母材 Parent material	1200	174	980	142	25	*	360
焊接区域 Welding area	840	122	680	98	20	0.70	*

供货范围  
Scope of Supply

长度 Length：可定制 customize
宽度 Width：800 / 1000 / 1200 / 1540 / 2000 / ... mm
厚度 Thickness：0.5 / 0.8 / 1.0 / 1.2 mm
提示：单幅钢带最宽宽度 2000mm，特殊规格可以定制。 Tips: Max. width of a single belt is 2000mm, customized sizes via cutting is available.

\* 本资料中数据具代表性但并不受到绝对保证。数据亦会因材料批次不同而改变。  
\* The data in this sheet are typical values, but not guaranteed. The information is subject to changes in different batches of material.



铭客AT1000是一种奥氏体钼合金不锈钢钢带, 其特点是：

MINGKE AT1000 is an austenitic molybdenum alloyed stainless steel belt and it is characterized by:

- 静态强度适中 Fair static strength
  - 良好的疲劳强度 Good fatigue strength
  - 优异的耐腐蚀性 Excellent corrosion resistance
- 中等耐磨性 Fair wear resistance
  - 很好的可修复性 Very good repairability

它是一种具有很高的可修复性的高度耐腐蚀钢带, 使其非常适合化学工业和其他严重腐蚀行业应用。

It is a highly corrosion resistant steel with very good repairability. This makes it good for processes in chemical industries and other severe corrosive applications.

化学成分 (公称值)  
Chemical Composition (Nominal) %

碳 C	锰 Mn	磷 P	硫 S	硅 Si	铬 Cr	镍 Ni	钼 Mo	氮 N	铁 Fe
≤0.08	≤2.00	≤0.05	≤0.03	≤1.00	16.00-18.00	10.00-15.00	2.00-3.00	≤0.10	-

静态强度  
室温下的标准强度 (公称数值)  
Static Strength  
Standard strength at room temperature (nominal values)

参量 Parameters	抗拉强度 Tensile strength		屈服强度 Yield strength		延伸率 Elongation	焊接系数 Weld factor	硬度 Hardness
	Mpa	Ksi	Mpa	Ksi	A5(%)	Rm/Rm	HV5
母材 Parent material	1000	145	780	113	10	*	320
焊接区域 Welding Area	700	102	500	73	6	0.70	*

供货范围  
Scope of Supply

长度 Length：可定制 customize
宽度 Width：800 / 1000 / 1200 / 1540 / 2000 / ... mm
厚度 Thickness：0.5 / 0.8 / 1.0 / 1.2 mm
提示：单幅钢带最宽宽度 2000mm，特殊规格可以定制。 Tips: Max. width of a single belt is 2000mm, customized sizes via cutting is available.

\* 本资料中数据具代表性但并不受到绝对保证。数据亦会因材料批次不同而改变。  
\* The data in this sheet are typical values, but not guaranteed. The information is subject to changes in different batches of material.





铭客CT1300钢带由回火硬化的碳钢制成, 其特点是：

MINGKE CT1300 steel belt is made of hardened and tempered carbon steel and is characterized by:

- 极好的静态强度 Very good static strength
  - 极好的疲劳强度 Very good fatigue strength
  - 极好的导热性能 Very good thermal properties
- 优异的耐磨性 Excellent wear resistance
  - 良好的可维修性 Good repairability

CT1300具有坚硬、光滑的表面和黑色氧化层, 使其适用于腐蚀风险低的任何应用。极好的导热性能使其非常适合用于烘烤以及液体, 糊状和细粒产品的加热和干燥。

CT1300 has hard & smooth surface and a black oxide layer, which makes it suitable for any application with a low risk for corrosion. Very good thermal properties make it ideal for baking and for heating and drying of liquids, pastes and fine-grained products.

化学成分(公称值)  
Chemical Composition (Nominal) %

碳 C	硅 Si	锰 Mn	磷 P	硫 S	铝 Ait	钛 Ti	镍 Ni	铜 Cu	铁 Fe
0.12	0.20	2.41	0.01	0.002	0.03	0.02	-	-	-

静态强度  
室温下的标准强度 (公称数值)  
Static Strength  
Standard strength at room temperature (nominal values)

参量 Parameters	抗拉强度 Tensile strength		屈服强度 Yield strength		延伸率 Elongation	焊接系数 Weld factor	硬度 Hardness
	Mpa	Ksi	Mpa	Ksi	A5(%)	Rm/Rm	HV5
母材 Parent material	1210	175	1050	152	10	*	360
焊接区域 Welding area	1100	159	1000	145	3	0.9	*

供货范围  
Scope of Supply

长度 Length：可定制 customize
宽度 Width：600 / 800 / 1000 / 1200 / 1500 / ... mm
厚度 / Thickness：0.8 / 1.2 / 1.4 / 1.5 mm
提示：单幅钢带最宽宽度 1500mm，超过此宽度需要纵向拼接。特殊规格可以定制。 Tips: Max. width of a single belt is 1500mm, customized sizes via cutting or longitudinal welding are available.

\* 本资料中数据具代表性但并不受到绝对保证。数据亦会因材料批次不同而改变。  
\* The data in this sheet are typical values, but not guaranteed. The information is subject to changes in different batches of material.



铭客CT1100钢带由硬化碳钢制成具有以下特点：

MINGKE CT1100 steel belt is made of hardened carbon steel and is characterized by:

- 良好的静态强度 Good static strength
  - 极好的疲劳强度 Very good fatigue strength
  - 极好的导热性能 Very good thermal properties
- 优异的耐磨性 Excellent wear resistance
  - 良好的可维修性 Good repairability

CT1100具有坚硬、光滑的表面和黑色氧化层, 使其适用于腐蚀风险低的任何应用。极好的导热性能使其非常适合用于烘烤以及液体, 糊状和细粒产品的加热和干燥。

CT1100 has hard & smooth surface and a black oxide layer, which makes it suitable for any application with a low risk for corrosion. Very good thermal properties make it ideal for baking and for heating and drying of liquids, pastes and fine-grained products.

化学成分(公称值)  
Chemical Composition (Nominal) %

碳 C	硅 Si	锰 Mn	磷 P	硫 S	铬 Cr	铜 Cu	镍 Ni	铝 Al	铁 Fe
0.67	0.26	1.01	0.012	0.002	0.22	0.02	0.01	0.03	-

静态强度  
室温下的标准强度 (公称数值)  
Static Strength  
Standard strength at room temperature (nominal values)

参量 Parameters	抗拉强度 Tensile strength		屈服强度 Yield strength		延伸率 Elongation	焊接系数 Weld factor	硬度 Hardness
	Mpa	Ksi	Mpa	Ksi	A5(%)	Rm/Rm	HV5
母材 Parent material	950	137	850	123	8.5	*	270
焊接区域 Welding area	850	123	800	116	8	0.89	*

供货范围  
Scope of Supply

长度 Length：可定制 customize
宽度 Width：600 / 800 / 1000 / 1200 / 1500 / ... mm
厚度 Thickness：0.8 / 1.2 / 1.4 / 1.5 mm
提示：单幅钢带最宽宽度 1500mm，超过此宽度需要纵向拼接。特殊规格可以定制。 Tips: Max. width of a single belt is 1500mm, customized sizes via cutting or longitudinal welding are available.

\* 本资料中数据具代表性但并不受到绝对保证。数据亦会因材料批次不同而改变。  
\* The data in this sheet are typical values, but not guaranteed. The information is subject to changes in different batches of material.





铭客DT1320是一种双相碳钢钢带, 含75%马氏体和25%的铁素体基体。其特点是：

MINGKE DT1320 is a dual phase carbon steel belt with 75% martensitic and 25% ferritic matrix. It is characterized by:

- 极好的静态强度 Very good static strength
  - 极好的疲劳强度 Very good fatigue strength
  - 极好的导热性能 Very good thermal properties
- 优异的耐磨性 Excellent wear resistance
  - 良好的可维修性 Good repairability

DT1320具有坚硬、光滑的表面和灰色氧化层, 使其适用于腐蚀风险较低的任何应用。极好的导热性能使其非常适合烘烤和类似应用。其低碳含量使其焊接后无需回火。

DT1320 has hard & smooth surface and a grey oxide layer, which makes it suitable for any application where there is a low risk of corrosion. Very good thermal properties make it ideal for baking and similar applications. Its low carbon content makes it possible to weld without post-annealing.

化学成分 (公称值)  
Chemical Composition (Nominal) %

碳 C	硅 Si	锰 Mn	铝 Al	铌 Nb	铁 Fe
0.15	0.5	1.8	0.04	0.03	-

静态强度  
室温下的标准强度 (公称数值)  
Static Strength  
Standard strength at room temperature (nominal values)

参量 Parameters	抗拉强度 Tensile strength		屈服强度 Yield strength		延伸率 Elongation	焊接系数 Weld factor	硬度 Hardness
	Mpa	Ksi	Mpa	Ksi	A5(%)	Rm/Rm	HV5
母材 Parent material	1340	194	1250	181	5	*	360
焊接区域 Welding area	1000	145	890	129	4	0.75	*

供货范围  
Scope of Supply

长度 Length：可定制 customize
宽度 Width：800 / 1000 / 1200 / 1500 / ... mm
厚度 Thickness：0.8 / 1.2 / 1.4 / 1.5 mm
提示：单幅钢带最宽宽度 1500mm，超过此宽度需要纵向拼接。特殊规格可以定制。 Tips: Max. width of a single belt is 1500mm, customized sizes via cutting or longitudinal welding are available.

\* 本资料中数据具代表性但并不受到绝对保证。数据亦会因材料批次不同而改变。  
\* The data in this sheet are typical values, but not guaranteed. The information is subject to changes in different batches of material.



铭客DT980是一种高合金双相超耐腐蚀不锈钢钢带。它有着极高的耐腐蚀开裂性。不需要上漆或涂层, 因此可最大限度减少维护工作量。广泛用于海水、化学品、石油天然气处理的压力管道系统、沼气池、蒸发器、道路罐车等承压容器。

MINGKE DT980 is a kind of high alloy duplex super corrosion resistant stainless steel belt. It has extremely high resistance for corrosion and high cracking property. It does not need painting or casting, which can save a large numbers of labor for maintenance. This belt is widely applied to pressure piping system for treatment of seawater, chemicals and oil & gas. It is also widely used for pressure resistant vessels for biogas digester, evaporator, road tanker, etc.

化学成分 (公称值)  
Chemical Composition (Nominal) %

碳 C	锰 Mn	磷 P	硫 S	硅 Si	铬 Cr	镍 Ni	氮 N	钼 Mo	铁 Fe
<0.03	<2.00	<0.03	<0.02	<1.00	21.00-23.00	4.50-6.50	0.10-0.20	3.00-3.50	-

静态强度  
室温下的标准强度 (公称数值)  
Static Strength  
Standard strength at room temperature (nominal values)

参量 Parameters	抗拉强度 Tensile strength		屈服强度 Yield strength		延伸率 Elongation	焊接系数 Weld factor	硬度 Hardness
	Mpa	Ksi	Mpa	Ksi	A5(%)	Rm/Rm	HV5
母材 Parent material	980	142	790	115	20	*	306
焊接区域 Welding area	710	103	520	75	15	0.65	*

供货范围  
Scope of Supply

长度 Length：可定制 customize
宽度 Width：800 / 1200 / 1540 / ... mm
厚度 Thickness：0.8 / 1.0 / 1.2 mm
单幅钢带最宽宽度 1540mm，特殊规格可以定制。 Tips: Max. width of a single belt is 1540mm, customized sizes via cutting is available.

\* 本资料中数据具代表性但并不受到绝对保证。数据亦会因材料批次不同而改变。  
\* The data in this sheet are typical values, but not guaranteed. The information is subject to changes in different batches of material.



